

XELTEK Engineering SUPERPRO® at Its Finest

For video instruction visit [Click Here](#)
SuperPro 6100 Hardware Self-test Procedure

- 1) Save the attached **sp6k_st.USB** file to **C:\SP6100\algo1**.
- 2) Type "Xeltek" under search when choosing a device in the software.
- 3) Select "**####..111...TST**" under **Device Name**.

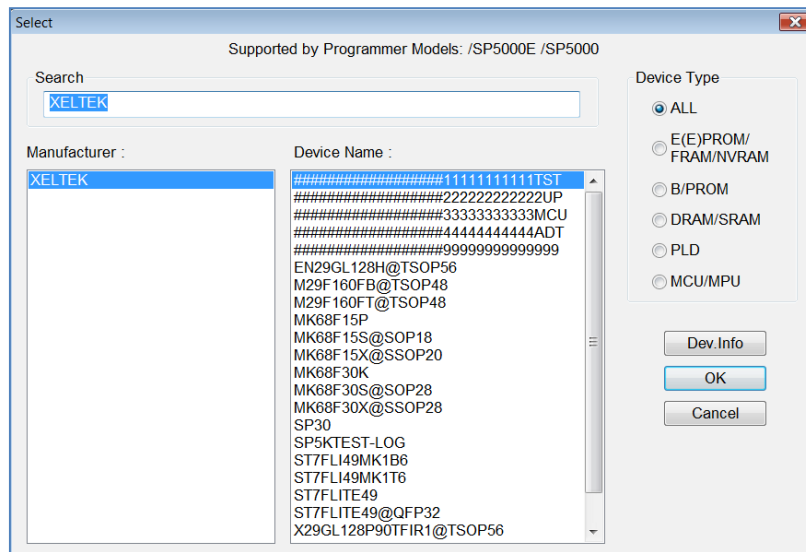


Figure 1: Screenshot of the Setting after choosing a device.

- 4) Modify "**Edit Auto**" as shown in Figure 2.

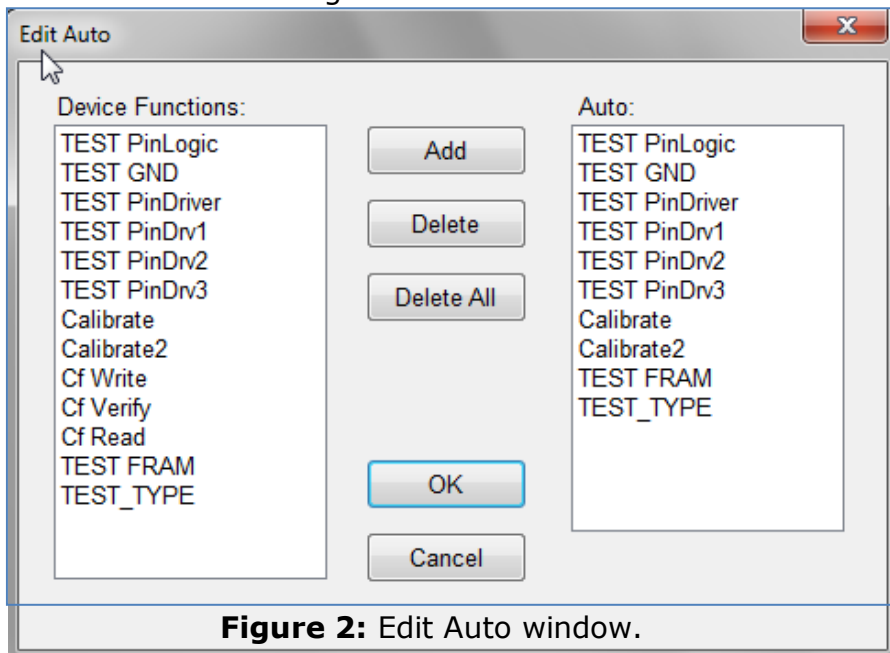


Figure 2: Edit Auto window.

- 5) Insert Zif48 (DX0001) socket adapter into the programmer module.
- 6) Run "**Auto**" **without** chips or other sockets installed on the programmer (only DX0001 (DIP48) socket should be installed).
- 7) Running "Auto" should yield the result in Figure 3, otherwise SuperPro6100 has a problem.

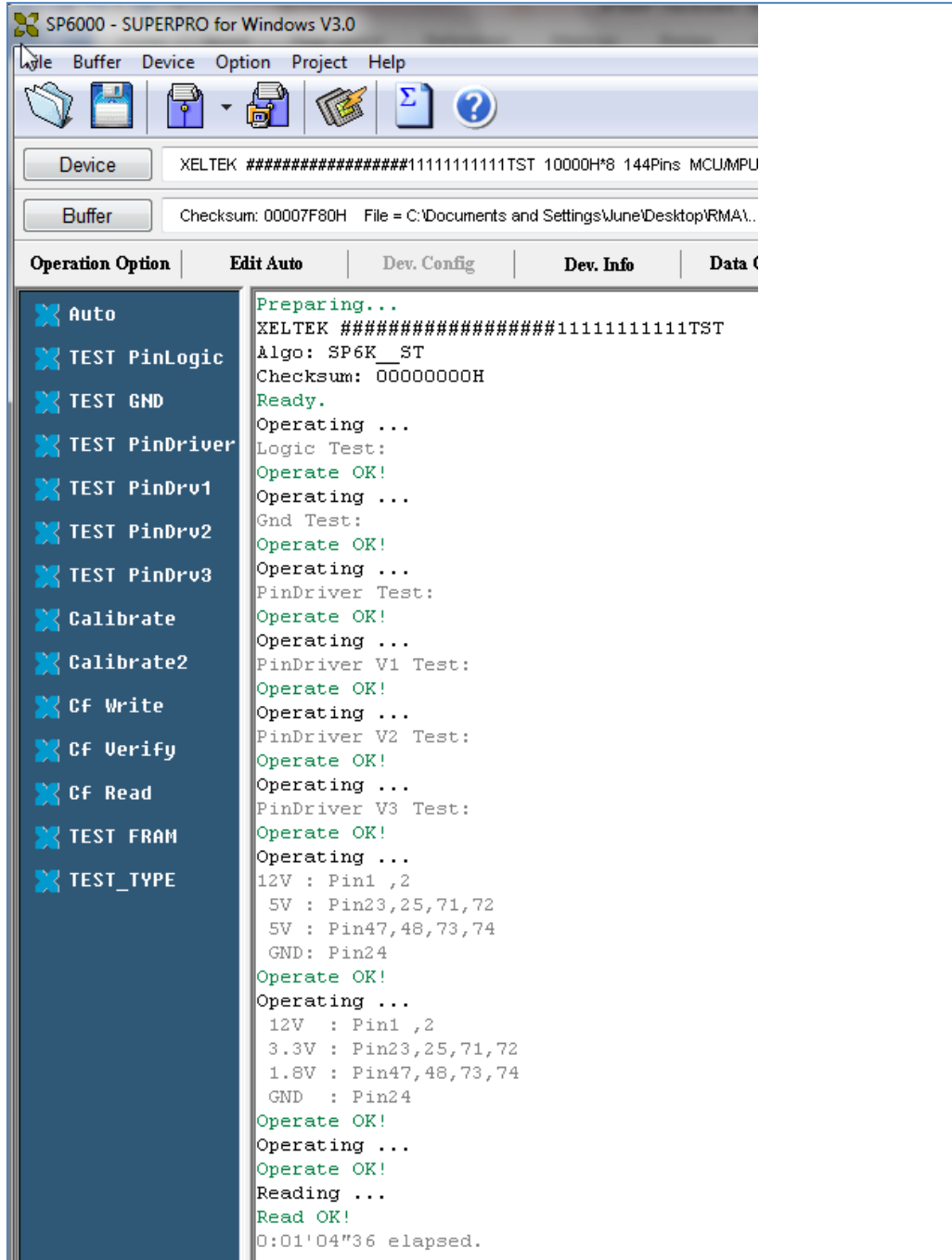


Figure 3: *Make sure there are no numbers below each Pin-Driver Test even if result shows "Operation OK!".

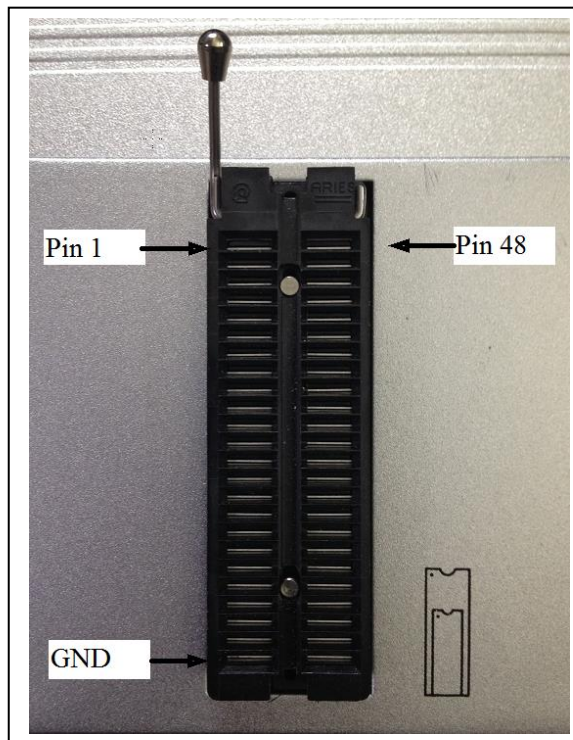
- 8) Measure calibration test voltages at **Pin1**, **Pin2**, **Pin23**, **Pin25**, **Pin47** and **Pin48** with a multi-meter. **Pin24** is GND.

	Pin	Calibrated Voltage	Tolerance
VP1	Pin 1 and Pin 2,	12.0 V	+/- 0.2V
VP2	Pin 23, Pin 25, Pin 47, and Pin48	5.0 V	+/- 0.2V

Table 1: Voltage Calibration

	Pin	Calibrated Voltage	Tolerance
VP3	Pin 23 and Pin 25,	3.3 V	+/- 0.2V
VP4	Pin 47, and Pin48	1.8 V	+/- 0.2V

Table 2: Voltage Calibration 2



- 9) Send [Xeltek](http://www.xeltek.com) the test result screenshot.